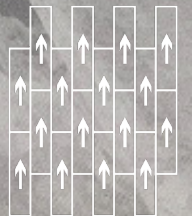
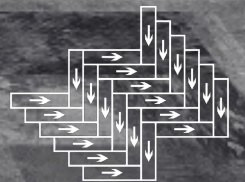


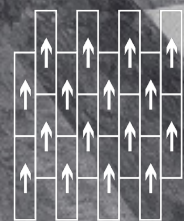


云阙



云阙 - 01 Ashlar
IN STOCK 现货



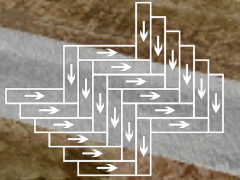


云阙 - 02-01Ashlar

7:3
IN STOCK 现货



云阙 - 03Herringbone
IN STOCK 现货

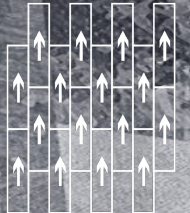


云阙 - 01-03 Herringbone

7.3
IN STOCK 现货

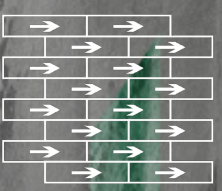


POWER
通用子载波



云阙 -02- 05Ashlar
IN STOCK 现货

WELCOME HOME
OOPS WE MEANT
WELCOME TO WORK



云阙 - 01-04 Ashlar

7: 3

IN STOCK 现货



云网-01-05 Herringbone r

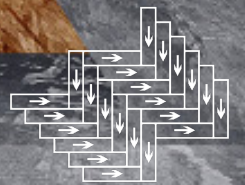
7.3

IN STOCK 现货





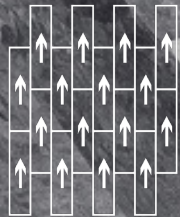
云翮 - 01- 02Herringbone
7: 3
IN STOCK 现货



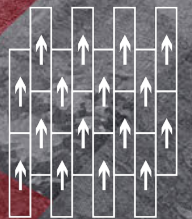
云阙 - 02 - 03Herringbone

7: 3

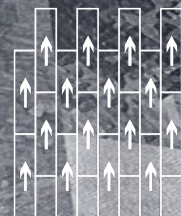
IN STOCK 现货



云阙 - 02 - 01Ashlar
7: 3
IN STOCK 现货



云阙 - 02 - 06Ashlar
7: 3
IN STOCK 现货



云阙 - 02 - 04Ashlar
IN STOCK 现货



云阙 -01
▲ IN STOCK 现货



云阙 -02
▲ IN STOCK 现货



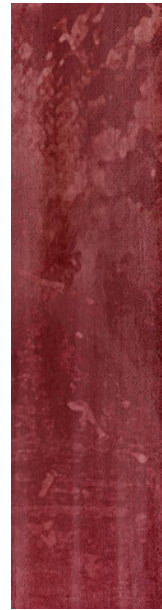
云阙 -03
▲ IN STOCK 现货



云阙 -04
▲ IN STOCK 现货



云阙 -05
▲ IN STOCK 现货

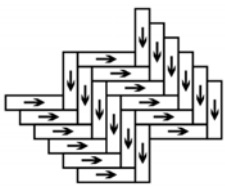


云阙 -06
▲ IN STOCK 现货

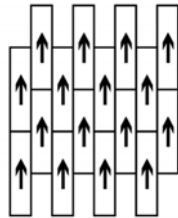
Specification 技术指标

| | |
|--------------------------------------------|---------------------------------------|
| Product Name 产品名称 | 云阙 |
| Product Code 产品编码 | FLASH 202 |
| Tufted construction 簇绒结构 | Tufted Textured Cut & Loop pile 高低圈割绒 |
| Fiber 纱线 | 100%Nylon 100% 尼龙 |
| Dye method 染色工艺 | Digital Printed 数码印花 |
| Gauge 针距 | 1/8 |
| Tufted weight(g/m ²) 绒重(克/平方米) | 680±5% |
| Tile size(mm) 地毯尺寸(毫米) | 250 x 1000 |
| Pile height(mm) 平均绒高(毫米) | 5.5 ± 0.5 |
| Total thickness(mm) 总厚度(毫米) | 8.5 ± 0.5 |
| Standard Backing 标准底背 | Glass fiber reinforced PVC |

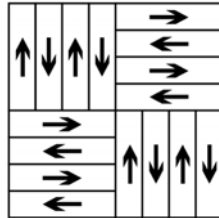
Recommended installation methods 建议铺装方式



Herringbone
人字铺



Ashlar
上下错位铺



Basketweave
网篮形



Anti-fouling



Anti-static



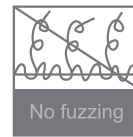
Environmental



Passed various tests



Fashion colors



100%B,C,F Yarn



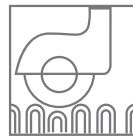
Reduced Flammability



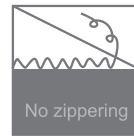
Isolation acoustic



Colorfast



Chair roulettes



No edge ravel



Wear resistance



Soil Resistance



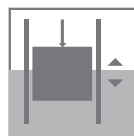
Wear Warranties



Dimensional Stability



Long life-span



Easy to transport



Non-mold